

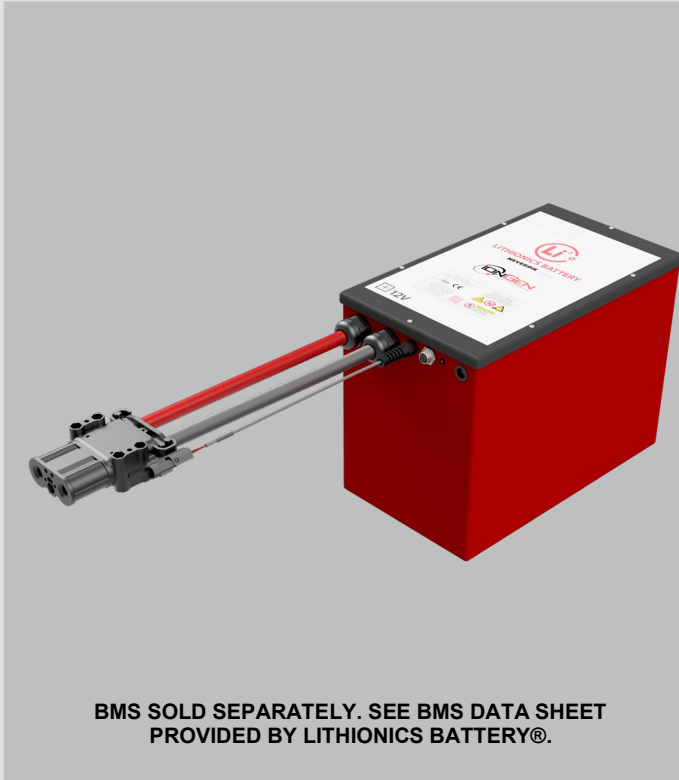
# LITHIONICS BATTERY®

LITHIUM-ION IRON PHOSPHATE BATTERY SYSTEMS



MODEL NUMBER:  
**GTX12V310A-E1508-HK**

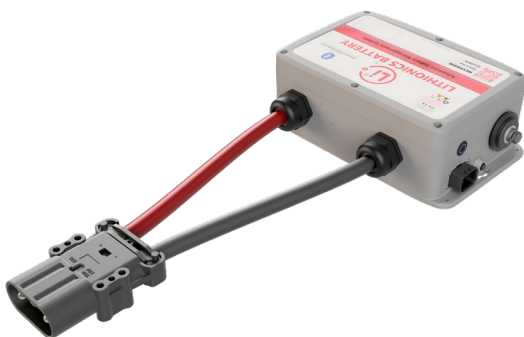
High Energy Density Safe LFP, iONbus® Data Network,  
UL Listed Internal Heating System, Fireproof Enclosure,  
UL1973: 2022 Listing Pending



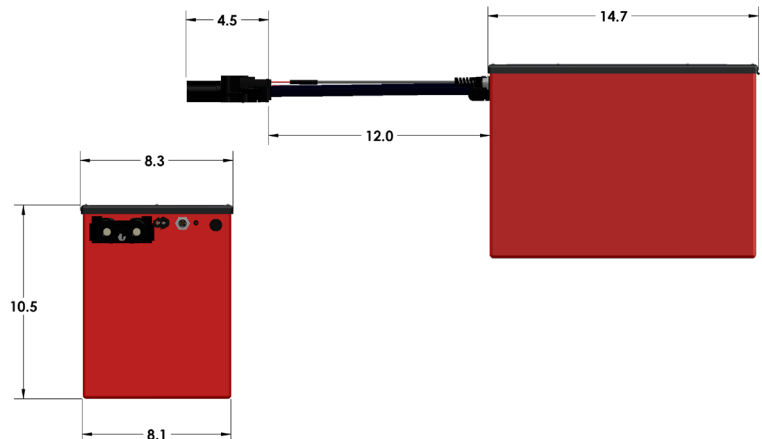
**BMS SOLD SEPARATELY. SEE BMS DATA SHEET  
PROVIDED BY LITHIONICS BATTERY®.**

Item	Description
Model	GTX12V310A-E1508-HK
Nominal Voltage	12.8V
Nominal Capacity	310Ah
Nominal Watt Hours	4,000Wh
Internal Resistance	<4mΩ
DC Power Connection	Anderson A 320 Female
<b>Charge</b>	
Charging Temperature Range (internal)	0 to 60C (32 to 140F), or -20 to 60C (-4 to 140F) with Heater Kit
Charge Voltage	14.4V
Float Voltage	13.4-13.6V
Recommended Maximum Charge Current	150A
Maximum Charging Current*	200A
<b>Discharge</b>	
Discharging Temperature Range (internal)	-4 to 140°F (-20 to 60°C)
Operating Voltage Range	10.4-13.4V
Recommended Maximum Discharge Current	150A
Maximum Discharge Current*	230A
Pulse Discharge Current (1 seconds)	1200A
Discharge Cut-Off Voltage	NeverDie® Power Reserve @ 12.0V Low-Voltage Cut-Off @ 10.4V
<b>Internal Heater</b>	
Power Rating	35W
Input Voltage	12V
Input Current	2.9A
<b>Mechanical</b>	
Dimensions	Length 14.7" Width 8.3" Height 10.5"
Weight	Approximately 63lbs (28.5kg)
Mounting Orientation	Upright position only (black lid faces up)
Ingress Protection	IP66
Enclosure Material	0.090" Aluminum 5052-H32
Enclosure Corrosion Protection	Iridite Chromate Conversion Coating with Powdercoat Paint
<b>Storage</b>	
Storage Temperature & Humidity Range	< 1 Month -4~95°F (-20~35°C), 45~75%RH < 3 Months 14~86°F (-10~30°C), 45~75%RH Recommended storage 59~95°F (15~35°C), 45%RH~75%RH
Long Term Storage	If the battery needs to be stored for > 3 months the voltage should be 13.2V (50%SoC), and stored at the recommended storage specifications shown above. Additionally, the battery needs at least one charge & discharge cycle every six months.
Self-Discharge Rate	Residual capacity ≤3% per month; ≤15% per year Reversible capacity ≤1.5% per month; ≤8% per year

\* Maximum charging and discharging rates apply depending upon the ambient temperature and duty cycle of the system. UL1973 tests of maximum charge and discharge current were performed at 25°C/77°F



**NEVERDIE®**



ENERGY

**310 AMP HOURS**  
**4000 WATT-HOURS**

**WARNING**

SEE PAGE 2 "FRONT" VIEW FOR PERMITTED INSTALLATION ORIENTATION.

NOTE: CONTACT LITHIONICS BATTERY® FOR A USER INSTALLATION GUIDE & STORAGE PROCEDURES. FOLLOW THE GUIDE TO ENSURE FITNESS OF USE & WARRANTY.

**12V**  
**GTX**  
**SERIES**