


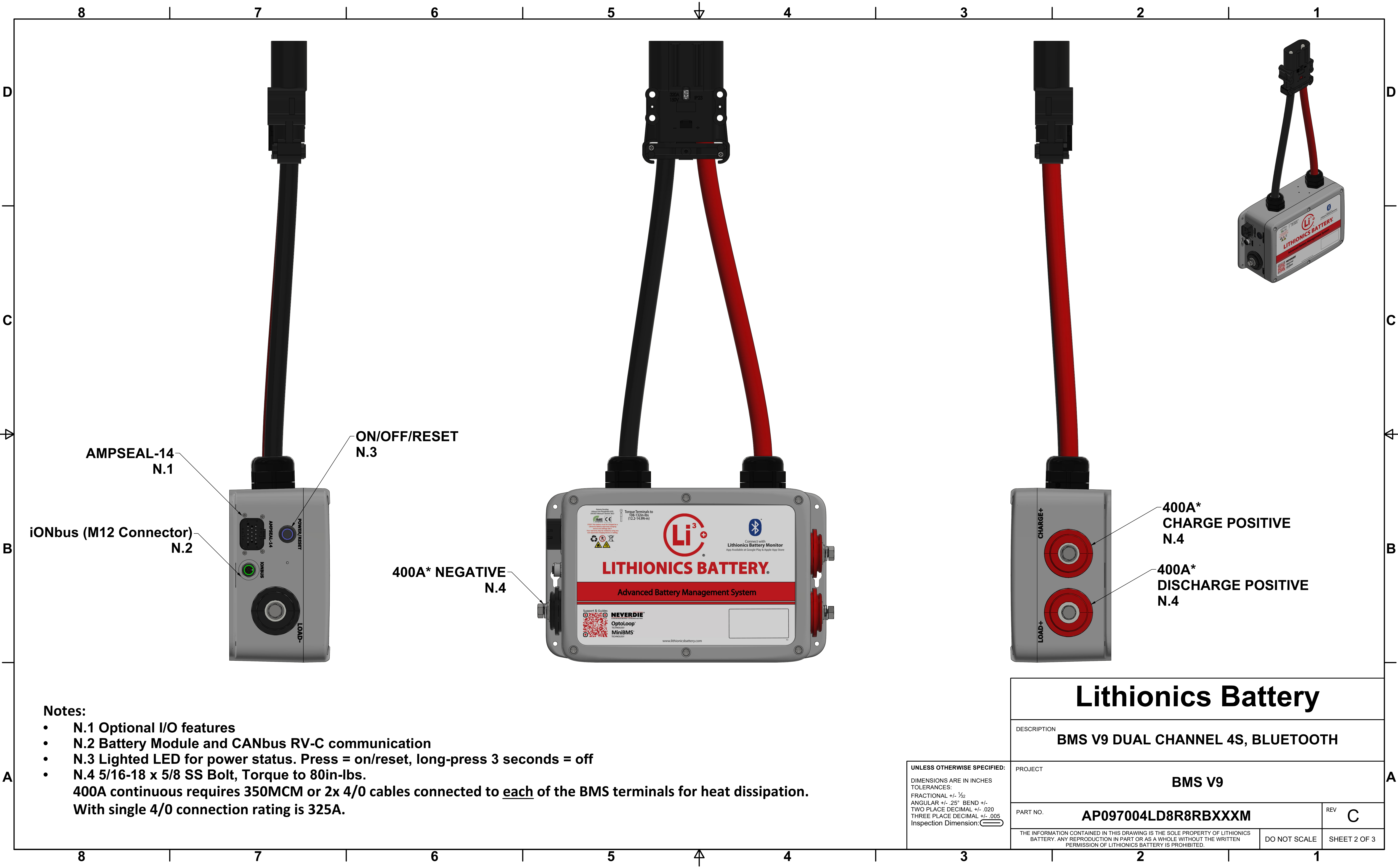
	Specifications
Voltage	12.8V to 102.4V (4S-32S)
Amperage Continuous	400A*
iONbus (M12 Connector)	Combines OptoLoop and CANbus RV-C technology into one circular connector. Replaces previous generation OptoLoop and TIS Temperature Sensors.
AMPSEAL-14 Functions (Support depends on specific AMPSEAL-14 wire harness)	FCC, AGSR, Remote Lighted Reset, Alarm, Battery Low LED, E-Stop, RS232, Aux. Power (AC-Sense)
Pre-charge	Included, all supported voltages
Dual Channel Option	Yes, for separate Charge and Discharge DC busses
Bluetooth	Includes App (iOS, Android). Monitoring, Datalogging, Firmware Updates, PIN Security
Protection Features	Reserve, Pack Over and Under Voltage, Cell Over and Under Voltage, Cell Over and Under Temperature, Contactor Over-Temperature, Contactor State, Short Circuit, Over Current, Pre-charge
Optional Features	Dual Channel, RS232 (replaces BT), Ethernet TCP/IP, E-Stop, IONGage, NMEA 2000 Port
Easily Integrates With	NCC CANbus Chargers, IonGage Display, IonGate for Victron Cerbo Support, Wakespeed WS500 Alternator Regulator, RV-C Compliant Devices, NMEA 2000 Compliant Devices
Weight	8.0 lbs
Dimensions	Overall: 13.0" x 23.74" x 4.0" Enclosure only: 11.25" x 7.0" x 4.0"
IP Rating	IP66



*** 400A continuous requires 350MCM or 2x 4/0 cables connected to each of the BMS terminals for heat dissipation. With single 4/0 connection rating is 325A.**

UNLESS OTHERWISE SPECIFIED:
 DIMENSIONS ARE IN INCHES
 TOLERANCES:
 FRACTIONAL $\pm 1/32$
 ANGULAR $\pm .25^\circ$ BEND \pm
 TWO PLACE DECIMAL $\pm .020$
 THREE PLACE DECIMAL $\pm .005$
 Inspection Dimension: 

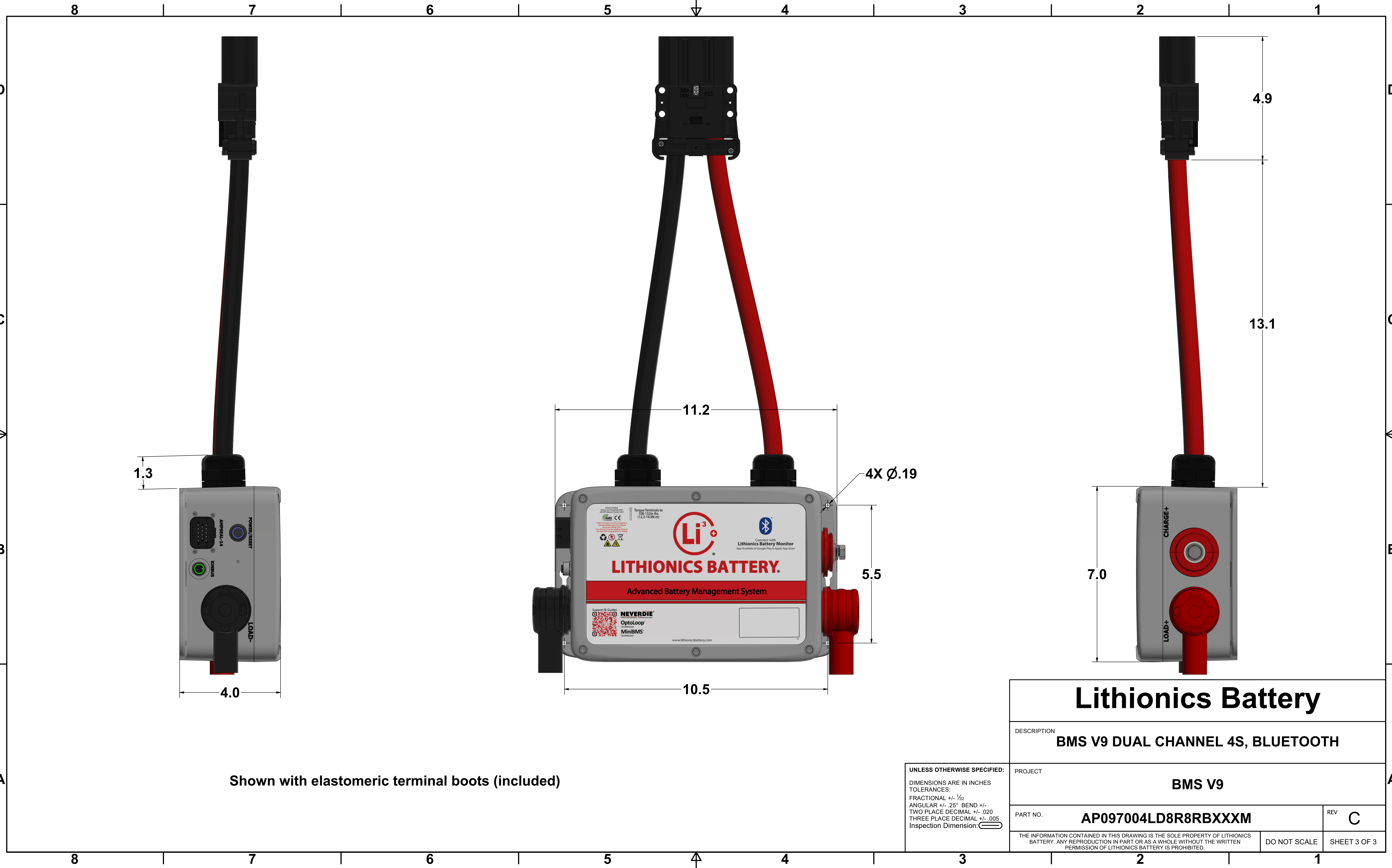
<h1>Lithionics Battery</h1>		
DESCRIPTION <h2>BMS V9 DUAL CHANNEL 4S, BLUETOOTH</h2>		
PROJECT <h2>BMS V9</h2>		
PART NO. <h2>AP097004LD8R8RBXXXM</h2>	REV <h2>C</h2>	
THE INFORMATION CONTAINED IN THIS DRAWING IS THE SOLE PROPERTY OF LITHIONICS BATTERY. ANY REPRODUCTION IN PART OR AS A WHOLE WITHOUT THE WRITTEN PERMISSION OF LITHIONICS BATTERY IS PROHIBITED.	DO NOT SCALE	SHEET 1 OF 3



- Notes:
- N.1 Optional I/O features
 - N.2 Battery Module and CANbus RV-C communication
 - N.3 Lighted LED for power status. Press = on/reset, long-press 3 seconds = off
 - N.4 5/16-18 x 5/8 SS Bolt, Torque to 80in-lbs.
400A continuous requires 350MCM or 2x 4/0 cables connected to each of the BMS terminals for heat dissipation.
With single 4/0 connection rating is 325A.

UNLESS OTHERWISE SPECIFIED:
DIMENSIONS ARE IN INCHES
TOLERANCES:
FRACTIONAL +/- 1/32
ANGULAR +/- .25° BEND +/-
TWO PLACE DECIMAL +/- .020
THREE PLACE DECIMAL +/- .005
Inspection Dimension:

Lithionics Battery		
DESCRIPTION BMS V9 DUAL CHANNEL 4S, BLUETOOTH		
PROJECT BMS V9		
PART NO. AP097004LD8R8RBXXXM	REV C	
THE INFORMATION CONTAINED IN THIS DRAWING IS THE SOLE PROPERTY OF LITHIONICS BATTERY. ANY REPRODUCTION IN PART OR AS A WHOLE WITHOUT THE WRITTEN PERMISSION OF LITHIONICS BATTERY IS PROHIBITED.		DO NOT SCALE SHEET 2 OF 3



A

B

C

D

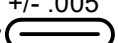
A

B

C

D

Shown with elastomeric terminal boots (included)

UNLESS OTHERWISE SPECIFIED:
DIMENSIONS ARE IN INCHES
TOLERANCES:
FRACTIONAL $\pm 1/32$
ANGULAR $\pm .25^\circ$ BEND $\pm .020$
TWO PLACE DECIMAL $\pm .020$
THREE PLACE DECIMAL $\pm .005$
Inspection Dimension: 

Lithionics Battery		
DESCRIPTION BMS V9 DUAL CHANNEL 4S, BLUETOOTH		
PROJECT BMS V9		
PART NO.	AP097004LD8R8RBXXXM	REV C
THE INFORMATION CONTAINED IN THIS DRAWING IS THE SOLE PROPERTY OF LITHIONICS BATTERY. ANY REPRODUCTION IN PART OR AS A WHOLE WITHOUT THE WRITTEN PERMISSION OF LITHIONICS BATTERY IS PROHIBITED.		DO NOT SCALE SHEET 3 OF 3