

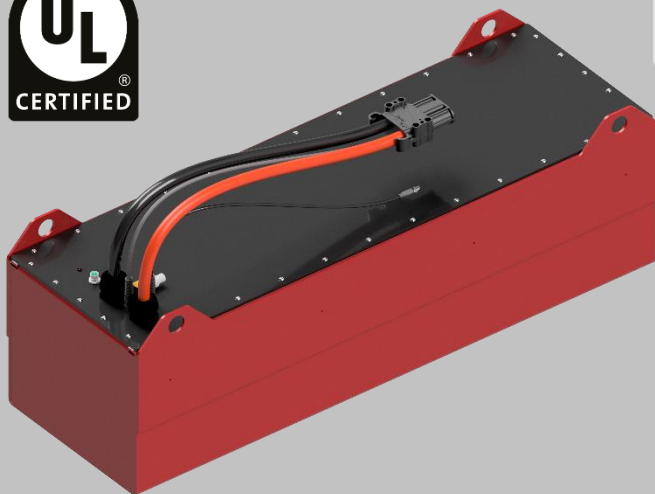
# LITHIONICS BATTERY®

LITHIUM-ION IRON PHOSPHATE BATTERY SYSTEMS



MODEL NUMBER:  
GTX12V1260A-F41-DIN-MODULE-UL

EXTERNAL BMS  
VERSION



**EXTERNAL BMS REQUIRED**

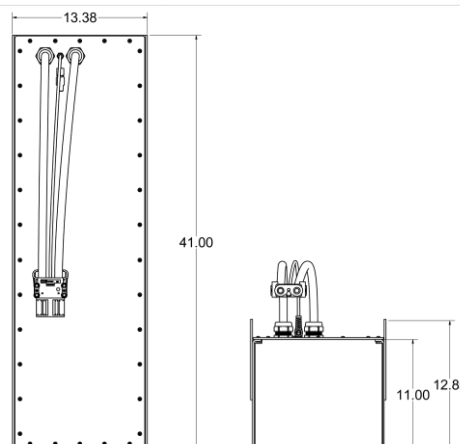
**BMS SOLD SEPARATELY. SEE BMS  
DATA SHEET PROVIDED BY LITHIONICS  
BATTERY®.**

Item	Description
Model	GTX12V1260A-F41-DIN-MODULE-UL
Nominal Voltage	12.8
Nominal Capacity	1260
Nominal Watt Hours	16128
Internal Resistance	<300 milliohms
<b>Charge</b>	
Charging temperature range	32F/0C to 131F/55C OR -4F/-20C with Heater Kit
Charge voltage	14.6
Recommended float charge voltage(for standby use)	13.4
Recommended max charge current*	300
Allowed max charge current*	400
<b>Discharge</b>	
Discharging temperature range	-4F/-20C to 131F/55C
Operating Voltage Range	11.6 to 13.4
Recommended max discharge current*	300
Max discharge current*	400
Pulse discharge current	1000
Discharge cut-off voltage	NeverDie® Power Reserve @ 12.00 Low-Voltage Cut-Off @ 11.60
<b>Mechanical</b>	
Dimensions	Length 41" Width 13.37" Height 12.85"
Weight	Approx. 295lbs (134kg)
<b>Storage</b>	
Storage Temperature & Humidity Range	< 1 Month
	-4~95°F (-20~35°C), 45~75%RH
	< 3 Months
Long Term Storage	14~86°F (-10~30°C), 45~75%RH
	Recommended storage
	59~95°F (15~35°C), 45%RH~75%RH
If the battery needs to be stored for > 3 months the voltage should be 13.2V (50%SOC), and stored at the recommended storage specifications shown above. Additionally, the battery needs at least one charge & discharge cycle every six months.	
Self-discharge rate	Residual capacity
	Reversible capacity
≤3% per month; ≤15% per year	
≤1.5% per month; ≤8% per year	

\* Maximum charging and discharging rates apply depending upon the ambient temperature and duty cycle of the system.  
UL1973 tests of maximum charge and discharge current were performed at 25°C/77°F



**NEVERDIE®**



ENERGY

**1260 AMP HOURS**

**PULSE AMPS: 1000 (1 SEC)**

**16128 WATT-HOURS**

## WARNING

1. LITHIUM BATTERIES ARE NOT DESIGNED FOR CHARGING IN SUB-FREEZING TEMPERATURES. CONTACT LITHIONICS BATTERY® FOR DETAILS ON OUR COLD WEATHER PACKAGE.
2. INSTALLATION: IT IS RECOMMENDED THAT MODULES BE INSTALLED BLACK LID UP.

NOTE: CONTACT LITHIONICS BATTERY® FOR A USER INSTALLATION GUIDE & STORAGE PROCEDURES. FOLLOW THE GUIDE TO ENSURE FITNESS OF USE & WARRANTY.

**12V**  
**GTX**  
**SERIES**