

LITHIONICS BATTERY®

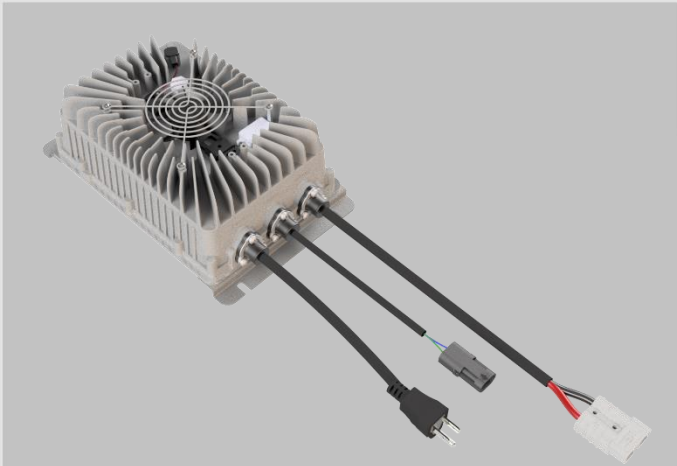
LITHIUM ION IRON PHOSPHATE BATTERY SYSTEMS



PART NUMBER:
20-300 NCC2500

NeverDie® CANbus CHARGER SERIES

USE: with NeverDie® BMS



NCC2500 Charger Technical Specifications

AC Input Voltage Range	85-265VAC
AC Input Voltage Nominal	120VAC / 220VAC
AC Input Frequency	50-60Hz
AC Power Factor	> 0.99
DC Output Voltage Nominal	24V-370V
DC Output Wattage	Max 2500W
DC Voltage Accuracy	≤ 0.5%
DC Current Accuracy	≤ 2%
Conversion Efficiency	> 95%
Operating Temperature	-25C to +55C
Storage Temperature	-40C to +80C
Environmental Rating	IP 66
Weight	12lbs
Dimensions (LxWxH)	10.8" x 10.3" x 3.4"

Model	DC Nominal Voltage	Max Output Current @ 110VAC Input	Max Output Current @ 220VAC Input
NCC2500	24V	25A	25A
NCC2500	48V	25A	35A
NCC2500	51V	25A	35A
NCC2500	72V	25A	30A
NCC2500	96V	13A	25A
NCC2500	144V	13A	20A
NCC2500	312V	10A	10A

CHARGER FEATURES

The NeverDie® CANBus Charger is designed to require a CANBus Data Connection from the NeverDie® Advanced or Standard series Battery Management for advanced charger control.

- ✓ Advanced high efficiency intelligent charger technology
- ✓ Sealed, highly water resistant, & compact enclosure (IP 66)
- ✓ 85-265VAC input range, 50/60 Hz
- ✓ > 0.99 Power Factor minimizes utility surcharges and maximizes use of AC power
- ✓ Precise processor-controlled advanced charging algorithm management
- ✓ CANBus data connection to NeverDie® Battery Management System for advanced charger control
- ✓ LED indication: charging stage & error reporting
- ✓ Short circuit, low & high voltage, over temperature, & reverse polarity protection
- ✓ Efficiency >95%
- ✓ 100% Quality Tested
- ✓ Parallel connect to increase charging rates

PARTS INCLUDED:

- 110VAC Cord/Plug
- Mating CANBus Connectors
- Mating Anderson DC Connector

OPTIONAL ACCESSORIES:

- DC Charger Harness
- Remote LED Status Indicator
- CANBus Cable Extension