

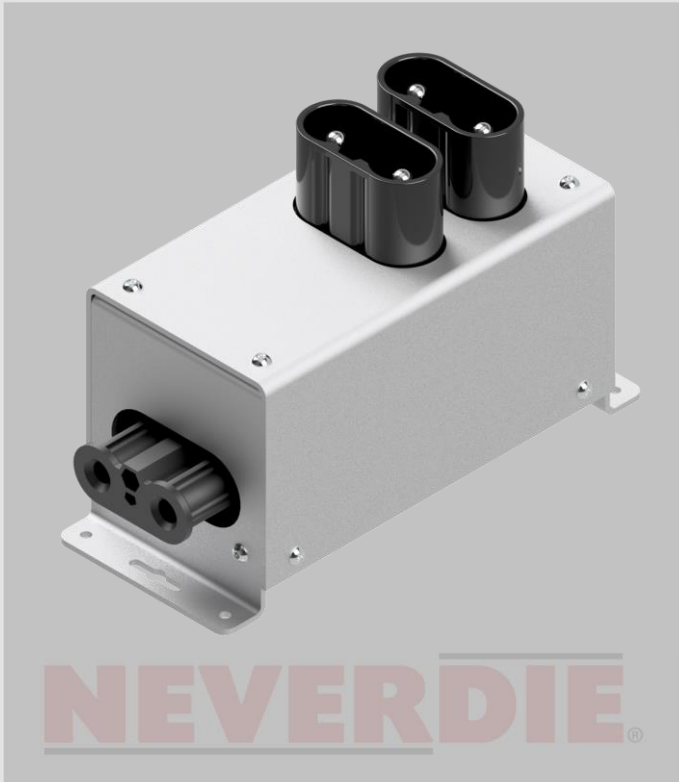
LITHIONICS BATTERY®

LITHIUM ION IRON PHOSPHATE BATTERY SYSTEMS



PART NUMBER:
76-DIN2P-02 – 2 Port Combiner Box

EXTERNAL
ACCESSORIES

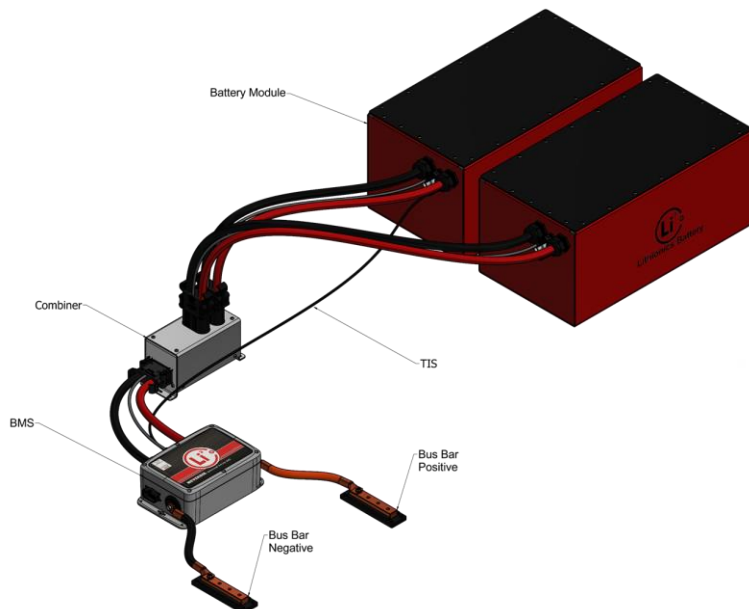


SPECIFICATIONS

The combiner box current rating is 400 amps continuous. However, the maximum current rating may be limited by the battery modules used and/or the Battery Management System rating. Please confirm the system-level maximum charge and discharge current capabilities with Lithionics Battery®.

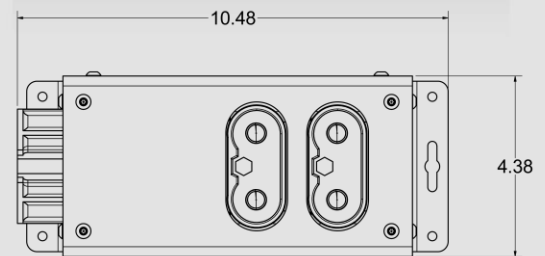
Lithionics Battery® recommends securing the battery connectors in place to the combiner box with cable ties after installation to prevent connectors from backing out.

Note: Jumper DIN connector required for unused ports.



DIMENSIONS

10.48 X 4.38 X 4.92
Measured in inches



2-Port Combiner Box: 8lbs

NOTE: CONTACT LITHIONICS BATTERY® FOR A USER INSTALLATION GUIDE & STORAGE PROCEDURES. FOLLOW THE GUIDE TO ENSURE FITNESS OF USE & WARRANTY.